

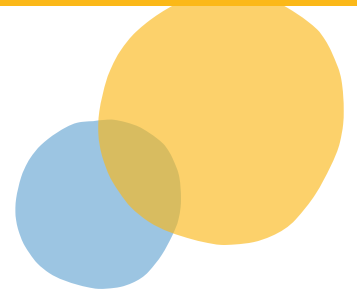
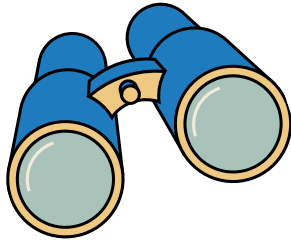
Upcoming Youth Programs at the RTP Estuary Center

April Vacation Week

Monday, April 8 - Friday, April 12

9a.m. - 4 p.m. daily

RTP Estuary Center



Family Walks

Saturday, April 6; 9:30-11 a.m.
at Honey Hill Preserve, Old Lyme

Saturday, April 20; 9:30-11 a.m.
at Canfield Meadow, Essex

After-school Adventures at the RTP Estuary Center

Tuesdays and Wednesdays 3:45- 5:00 p.m.

Buses available in Lyme and Old Lyme

Session 5 begins April 16

Family Day at the RTP Estuary Center

Saturday, April 27; 1 - 5p.m.

Registration is Open

RTP Estuary Center Summer Camp

Camp Weeks: June 17-August 16

Ages 5-13



For more information visit our website at
ctaudubon.org/rtppec or email rtppec@ctaudubon.org